

Chippewa County 2019 Household Hazardous Waste Clean Sweep Schedule



Take a look in your garage, kitchen, basement, or workshop. Some of the household products you find here may require special consideration in their use, storage, and disposal. Improper disposal of these products can cause fires, injuries to people and animals, and groundwater contamination. Chippewa County is making it easy for residents to get rid of household hazardous waste. Please consult the table below for a convenient time and location. Please call the Chippewa County Recycling Program at **726-7999** if you have any questions.

<u>Date</u>	<u>Location</u>		<u>Time</u>
Saturday April 13	Northern Wisconsin State Fairgrounds 225 Edward St, Chippewa Falls		8 am - Noon

Appliances, electronics, and scrap metal will also be accepted (fees may apply).

Saturday Oct. 26	Northern Wisconsin State Fairgrounds 225 Edward St, Chippewa Falls		8 am - Noon
----------------------------	---	--	-------------

Appliances, electronics, and scrap metal will also be accepted (fees may apply).

DO BRING:

Oil/solvent-based paints	Heavy metal paints
Antifreeze	Corrosives
Pesticides	Solvents
Wood preservatives	Poisons
Waste motor oil	Cleaners
Fuel mixtures, kerosene, fuel oil	Fluorescent bulbs*
Thinners, strippers, stains, varnish	Aerosol cans
Mercury and other heavy metals	Household batteries
Lead acid batteries	Oil Filters*
Scrap Metal	1 and 20 lb. propane cylinders

* A fee may be charged

DO NOT BRING:

- Mattresses
- Tires
- Furniture
- Latex paint
- Radioactives
- Business waste
- Empty and dry containers
- Explosives or ammunition
- Biological and infectious wastes
- Pressurized cylinders
- Picric Acid

HAZARDOUS WASTE WILL BE ACCEPTED FOR FREE FROM ALL CHIPPEWA COUNTY RESIDENTS!!

Persons may bring scrap metal to a dumpster that will be provided on April 13 and October 26, 2019 at the Northern Wisconsin State Fairgrounds free of charge.

Clean Sweep Collection and Disposal Guidelines

1. *No commercial or industrial wastes will be accepted.*
2. *All products must be in original containers or positively identified for liability and safety reasons.*
3. *DO NOT MIX substances together – lethal products can result.*
4. *Package carefully – line a cardboard box with a plastic bag or separate each product with folded newspaper.*
5. *Before deciding to bring a product to the Clean Sweep consider using it up according to label directions or give it to a friend or neighbor who will use it as intended.*

An Ounce of Prevention

Your participation in Clean Sweep will prevent serious accidents in your home and the environment. You can clean hazardous materials out of your home and be rest assured they will receive proper disposal through Clean Sweep.

Lending a Helping Hand

Do you have elderly or disabled neighbors or family members who can't make it to a Clean Sweep? Lend a helping hand and help the environment. Volunteer to take their household hazardous wastes to a Clean Sweep collection site for them.



Latex Paint, What to do!?!

Many Chippewa County residents wonder why Chippewa County Clean Sweep events have never accepted latex paint. Latex paint is composed of primarily water and small amounts of other materials which are essentially non-toxic. Because latex paint is made up of primarily water it can be evaporated and dried out by the homeowner and does not need to be handled through an expensive Household Hazardous Waste Clean Sweep Program. Here are some tips on how to dispose of latex paint at home.

For small amounts of paint:

- # Remove the lid and let the paint dry in the can. Stir the paint occasionally to speed drying.
- # Or, brush paint in layers on newspaper or cardboard.

For larger amounts of latex:

- # Pour one-inch layers of paint into a cardboard box lined with plastic. Allow the paint to dry one layer at a time - thin layers will speed up the drying process.
- # Or, mix paint with cat litter, sawdust or redi-mix concrete (1:1 ratio) in cardboard boxed lined with plastic and let dry.

Throw the completely dried paint, cans and other materials in the trash. Leave the lids off paint cans so garbage haulers will see that the paint is dry and accept them.

*Chippewa County
Businesses with
Hazardous
Wastes*



**Clean Sweep Program for
Very Small Quantity Generators
of Hazardous Wastes for 2019**

2019 Price Schedule

(Use this schedule to initially estimate your costs)

Chippewa County, in cooperation, with WRR Environmental Services are pleased to announce two Clean Sweep collections for Very Small Quantity Generators (VSQG's) of hazardous wastes in 2019.

How do I know if my business is a VSQG?

A business is defined as a VSQG if they generate less than 220 pounds of hazardous waste in any month and accumulate less than 2,205 pounds of hazardous waste in storage.

Where and When will this program be held?

All wastes must be transported by the generator to the Northern WI State Fairgrounds, Chippewa Falls. The collections will be held on April 11 and October 24, 2019, from 10:30 a.m. – 1 p.m.

How can my business participate?

This program operates on a *fee-for-service* basis. Participating companies must pre-register following the procedures listed below.

1. You must provide an inventory to WRR of what you will be bringing to the event. (Use the form provided by WRR.) You may mail or fax the inventory/receipt form to WRR.
2. WRR will provide you with a cost estimate for the inventory you submit.
3. If you decide to participate, contact WRR and they will schedule a time for you to deliver your hazardous wastes. They will also send you a VSQG HW Drop-off receipt.
4. You must bring your pre-approved wastes, the receipt, and a business check (or cash) to the collection site at the scheduled time. If you pay by check, leave the amount blank.
5. You must follow applicable shipping regulations when transporting materials to the collection site.

Item	Cost	Item	Cost
Oil Filters	\$0.25/lb	Corrosives (acidic & alkaline)	\$2.30/lb
Paint & paint related materials	\$0.40/lb	Ethylene glycol	\$0.40/lb
Oxidizers Pesticides & Toxics	\$2.30/lb	Mercury (elemental & compounds)	\$8.00/lb
Spray Foam Cylinders (Part A & Part B)	\$450 ea	PCB's	\$2.00/lb
Reactives (Cyanides/Dangerous when wet/Organic Peroxides/Spontane Combustible	\$3.80/lb	Gasoline & Oil	\$0.40/lb
Aerosols	\$1.00/lb	Propane Cylinder – 1 lb	\$1.25/lb
		Propane Cylinder – 10 lb	\$12 ea
		Propane Cylinder – 20 lb	\$12 ea
Flammable Liquids in drums	\$60/drum	Water-based liquids in drum	\$90/drum
Oil Absorbents	\$0.25/lb	Batteries (Lithium, Mercury)	\$3.75/lb
Batteries (Alkaline, Rechargeable)	\$1.00/lb	Fluorescent Lamps (4 feet or less)	\$0.50 ea
Fluorescent Lamps (over 4 feet)	\$0.75 ea	Compact Lamps	\$0.75 ea
Circular Lamps	\$0.50 ea	U-shaped Lamps	\$0.50 ea
High Intensity Discharge Lamps	\$1.35 ea	LED Lamps	\$1.25 ea
Neon Lamps	\$11.50/lb	Broken Lamps	\$1.50/lb

The following materials **cannot** be accepted: *Explosives, medical or infectious waste, and radioactive materials.*

For further information about this program or to obtain pre-registration/inventory forms please contact the Chippewa County Recycling Program at 726-7999 or BJ Michalek, WRR, at 834-9624 or by email bmichalek@wrres.com.



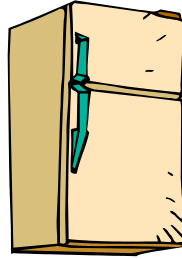
CHIPPEWA COUNTY

2019 Appliance Collection

Saturday, April 13

Chippewa Falls 8 am – Noon

Northern Wisconsin State Fairgrounds
225 Edward Street, Chippewa Falls



Saturday, April 13

City of Stanley 8 am – Noon

Public Works Department
100 State Street, Stanley

Chippewa Falls Appliance Fees:



Refrigerator.....\$15	Washer..... FREE
Freezer.....\$15	Dryer..... FREE
Dehumidifier.....\$15	Dishwasher..... FREE
Air Conditioner..\$15	Water Softener... FREE
Furnace..... FREE	Water Heater..... FREE
Microwave.... FREE	Stove..... FREE
Humidifier.... FREE	

Stanley Appliance Fees:

Microwave.....	\$20
Freon Appliance.....	\$25
Non-Freon Appliance.....	\$15
Small Appliances.....	\$ 5
(Toaster, Mixer, etc.)	

Saturday, October 26

8 am – Noon



Chippewa Falls

Northern Wisconsin State Fairgrounds
225 Edward Street, Chippewa Falls

If you have any questions, please call the Chippewa County Recycling Program at 726-7999.



THINK GREEN



Recycle your Electronics

Electronics contain valuable, reusable materials like gold, steel, silver, copper and glass. They also contain harmful materials like lead mercury, cadmium and chemical flame retardants. Recycling and reusing electronics protects the environment, conserves valuable raw materials and preserves landfill space.

CHIPPEWA COUNTY RESIDENTIAL ONE-DAY EVENTS

Saturday, April 13, 2019

- Northern WI State Fairgrounds
8 am – Noon
225 Edward St., Chippewa Falls

Saturday, October 26, 2019

- Northern WI State Fairgrounds
8 am – Noon
225 Edward St., Chippewa Falls

Free Electronics Recycling

Computer	Fax Machine
CPU	MP3 player
DVR	VCR
Laptop	Stereo Equipment
PDA	Keyboard
DVD player	Scanner
Cellphone	Camera
Copy Machine	Boards
Printer	Camcorder

Electronics Fees

Monitor	\$5
Plastic Television	\$20
Wood Television	\$40
Big Screen Television	\$40

CITY OF STANLEY RESIDENTIAL ONE-DAY EVENT

Saturday, April 13, 2019

- Stanley Public Works Department
8 am – Noon
100 State St., Stanley

Electronics Fees

TV's up to 36" -plastic	\$45
TV's -wood	\$55
Computer Monitors	\$20
Computer Towers	\$15
Keyboards	\$10
Desktop printer/scanner	\$15
Copiers-Desktop	\$20
Copiers-Floor Model	\$40
Cellphone, power supplies	\$ 5
Circuit boards	\$ 5

DID YOU KNOW?

You can take your electronics and appliances to the following businesses during normal operating hours!

- ✓ First Choice - 715-833-2005
- ✓ Best Buy - 715-833-0666

Call for rates.

Wisconsin's electronics recycling law went into effect January 1, 2010.
The law bans certain residential and business electronics from Wisconsin
landfills and incinerators.





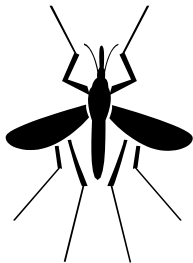
CHIPPEWA COUNTY 2019 Waste Tire Program

A COUNTY PROGRAM

The Waste Tire program provides an opportunity for Chippewa County residents to dispose of their discarded tires for a low fee at convenient collection sites. This program provides an outlet for waste tires and assembles large amounts of waste tires sufficient to be loaded on semi-trailers and transported to facilities where the tires are converted to tire derived fuel (TDF).

ELIMINATE HAZARDS

It is estimated that in Wisconsin five million used tires are discarded each year. Waste tires present a health hazard and are fertile breeding grounds for mosquitoes and other insects. Large stockpiles of waste tires pose a fire hazard.



CORNELL COLLECTION DATES

Located at the Chippewa County Highway Shop at 20250 Cty Hwy K, just south of Cornell.

May 16 *1 pm - 5 pm*
May 18 *8 am - Noon*
September 21 *8 am - Noon*
October 17 *1 pm - 5 pm*

LAFAYETTE COLLECTION DATES

Located behind the Lafayette Town Hall, just south of County Hwy X, at 5765 197th Street.

April 25 *1 pm - 5 pm*
May 18 *8 am - Noon*
May 23 *1 pm - 5 pm*
June 13 *1 pm - 5 pm*
July 25 *1 pm - 5 pm*
August 22 *1 pm - 5 pm*
September 21 *8 am - Noon*
September 26 *1 pm - 5 pm*
October 24 *1 pm - 5 pm*

FEE SCHEDULE

	Res/Gov	Business
Passenger (through 15")	\$ 1.50	\$ 2
with rim	\$ 3	\$ 4
Passenger (16-17")	\$ 3	\$ 4
with rim	\$ 5	\$ 8
L-15	\$ 3	\$ 4
with rim	\$ 5	\$ 8
Truck (18-19")	\$ 5	\$ 9
with rim	\$ 8	\$ 11
Truck (20-22.5")	\$ 8	\$ 11
with rim	\$ 11	\$ 14
Truck (over 22.5")	\$ 10	\$ 13
with rim	\$ 13	\$ 16
Tractor (to 28)	\$ 12	\$ 17
Tractor (over 28)	\$ 17	\$ 25
with rim	\$ 22	\$ 33
Heavy Equipment (under 500 lbs.)	\$ 17	\$ 25
Heavy Equipment (500-700 lbs.)	\$ 35	\$ 50
Bulk Loads	\$150/ton	\$200/ton

FURTHER INFORMATION

Tire rims can be taken to a local scrap metal dealer for disposal. Where deemed necessary the County may require weight receipts (gross and tare) to determine the tonnage of waste tires brought for disposal. The County reserves the right to refuse acceptance of any waste tire for specific reasons. For more information regarding the tire collections call 726-7999.

Fluorescent Bulb Recycling

Fluorescent light bulbs are an extremely cost effective and an energy efficient way to light your home or business. There is, however, one drawback; fluorescent bulbs contain mercury vapor. Mercury is a neurotoxin that when released into the environment contaminates our water and the aquatic food chain.

This is what caused the DNR to post fish consumption advisories on every lake in Wisconsin. Chippewa County has teamed up with local hardware stores and recycling programs to provide a fluorescent bulb collection program to prevent any more damage from being done. Now, both residents and businesses can bring their used fluorescent bulbs to a convenient location, year round, for recycling at cost effective prices.

Chippewa Falls

Jacobson's Hardware (Lake Wissota): (715) 861-2055

Jacobson's Hardware (downtown): (715) 861-2050

Stanley

Hazaga's True Value: (715) 644-3375



NOTE: The new low-mercury bulbs (or green-tipped bulbs) still contain mercury vapors and should still be recycled. Landfills have banned ALL fluorescent bulbs.

ATTENTION BUSINESSES WITH HAZARDOUS WASTE!

ANNOUNCING A CLEAN SWEEP PROGRAM FOR VERY SMALL QUANTITY GENERATORS



A BUSINESS THAT GENERATES <220 POUNDS OF HAZARDOUS WASTE IN ANY GIVEN MONTH, AND ACCUMULATES <2,205 POUNDS OF HAZARDOUS WASTE IN STORAGE.

This program operates on a fee-for-service basis. Participating companies must pre-register following the procedures listed below.

Participation Procedures

1. You provide an inventory to WRR of what you will be bringing to the event. (Use the form provided by WRR).
2. You mail or fax the inventory/receipt form to WRR.
3. WRR will provide you with a cost estimate for the inventory you submit.
4. If you decide to participate, contact WRR and they will schedule a date and time for you to deliver your HW.
5. You bring your pre-approved HW, the receipt, and a business check (or cash) to the collection site at the scheduled time. If you pay by check, leave the amount blank.
6. You must follow applicable shipping regulations when transporting materials to the collection site.

Item	Cost	Item	Cost
Flammable Liquids in Drums	\$60 / drum	Water-Based Liquids in Drums	\$90 / drum
Paints & Paint Related Material	\$0.40 / lb	Oil Absorbents	\$0.25 / lb
Gasoline/Oil	\$0.40 / lb	Oil Filters	\$0.25 / lb
Ethylene Glycol	\$0.40 / lb	Fluorescent Lamps: 4 feet or less	\$0.50 each
Oxidizers	\$2.30 / lb	Fluorescent Lamps: over 4 feet	\$0.75 each
Pesticides & Toxics	\$2.30 / lb	Compact Lamps	\$0.75 each
Corrosives (Acidic & Alkaline)	\$2.30 / lb	Circular Lamps	\$0.50 each
Reactives (Cyanides/Dangerous When Wet/ Organic peroxides/Spontane Combustible)	\$3.80 / lb	U-Shaped Lamps	\$0.50 each
Aerosols	\$1.00 / lb	High Intensity Discharge Lamps	\$1.35 each
Propane Cylinders-1 lb size	\$1.25 / lb	LED Lamps	\$1.25 each
Propane Cylinders - 10 lb & 20 lb sizes	\$12.00 /each	Neon Lamps	\$11.50 / lb
Spray Foam Cylinders (Part A & Part B)	\$450 / each	Broken Lamps	\$1.50 / lb
PCB's	\$2.00 / lb	Batteries (Lithium, Mercury)	\$3.75 / lb
Mercury (Elemental & Compounds)	\$8.00/lb	Batteries (Alkaline, Rechargables)	\$1.00 / lb
		NOTE: lb = pounds gross weight	

Price Schedule (Use this schedule to initially estimate your costs.)

The following materials **cannot** be accepted: Explosives, medical or infectious waste and radioactive materials.

For further information about this program, contact BJ Michalek at (715) 834-9624 or by email at bmichalek@wres.com.

HW= hazardous waste

VSQG = very small quantity generator